



89 Cherry Wood Crescent Fulford, York, YO19 4QL

A beautifully presented three-bedroom Chalet Bungalow. Situated to the South of York, in the sought after area of Fulford, within easy reach of York city centre and the A19/A64.

It is conveniently located on the edge of the city centre, providing easy access to local amenities, The University of York, York city centre and the various commuter links. Situated in a prime location for those seeking the best education for Primary & Secondary school children, this property will be popular for a range of buyers.

This much-loved home boasts three generous bedrooms and beautifully kept gardens to the front and rear. The entrance hallway leads into a welcoming hallway and into a spacious lounge with a dining room to the rear and an exquisite kitchen/diner with built in appliances complemented by stylish worktops. Patio doors from the kitchen lead into the rear garden offering privacy and peacefulness. This well-appointed home offers versatility in a ground floor bedroom and family bathroom and two further bedrooms to the first floor with integral storage.

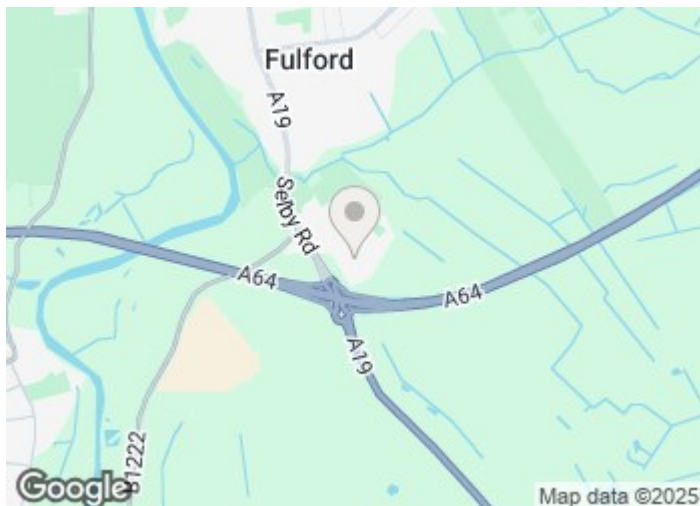
£350,000

89 Cherry Wood Crescent

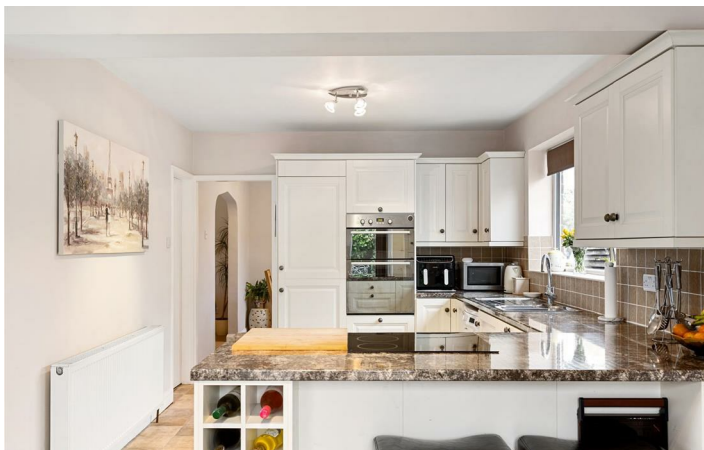
Fulford, York, YO19 4QL



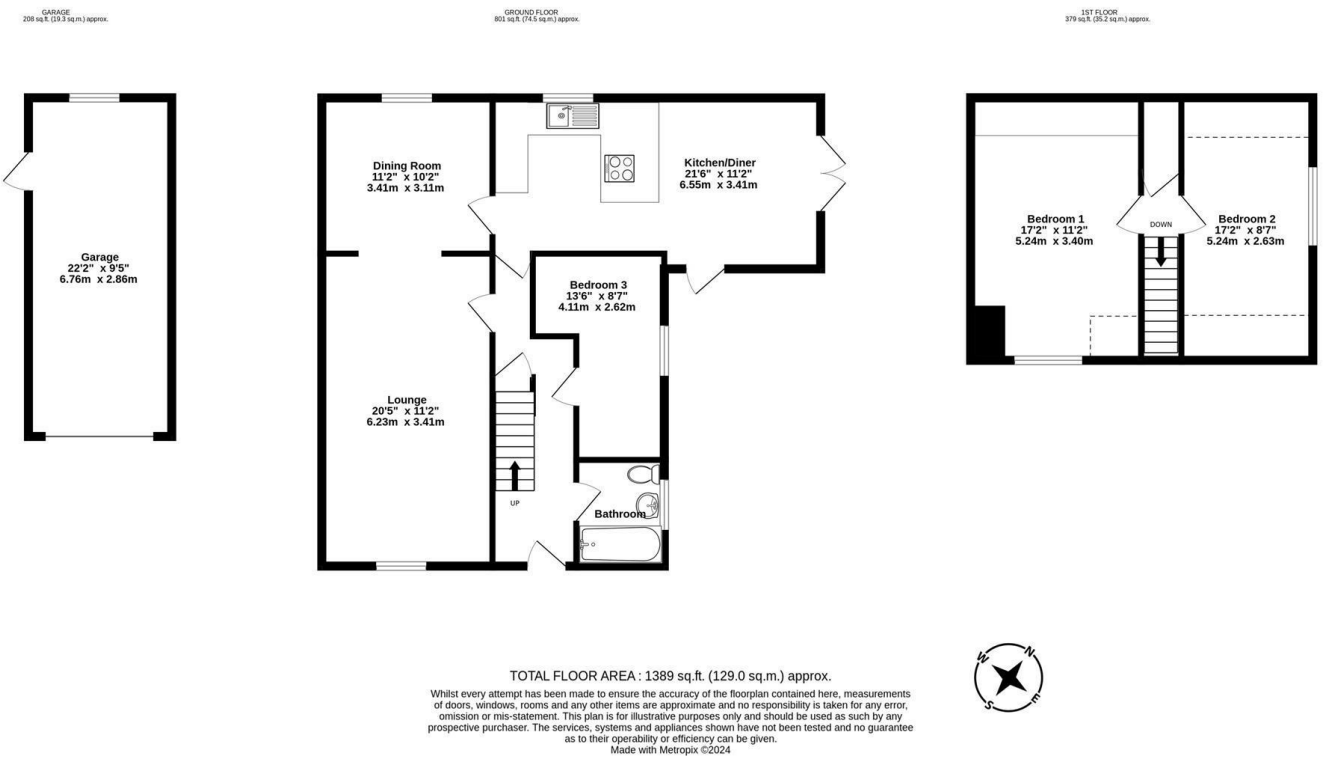
- Popular Area of Fulford
- Peaceful Corner Plot
- Off Street Parking & Garage
- Three Bedrooms
- Kitchen/Diner
- Front & Rear Gardens



Directions



Floor Plan



These particulars, whilst believed to be accurate are set out as a general outline only for guidance and do not constitute any part of an offer or contract. Intending purchasers should not rely on them as statements of representation of fact, but must satisfy themselves by inspection or otherwise as to their accuracy. No person in this firms employment has the authority to make or give any representation or warranty in respect of the property.

Energy Efficiency Rating		
	Current	Potential
Very energy efficient - lower running costs		
(92 plus) A		84
(81-91) B		
(69-80) C		
(55-68) D	59	
(39-54) E		
(21-38) F		
(1-20) G		
Not energy efficient - higher running costs		
England & Wales		EU Directive 2002/91/EC